

# SIELC

ALLTESTA™ ANALYZER



CROMITE™ ANALYZER

SIELC Technologies is a US-based scientific company that has been at the forefront of innovation in the liquid chromatography space for over two decades, providing HPLC products and services to clients around the world.

The image features a central Cromite Analyzer, a white and blue HPLC instrument with two clear vials containing blue liquid. The background is decorated with coffee-related line art: coffee beans, a whole coffee fruit, a coffee slice, pencils, and paper clips. Large orange and blue circles are also present. The text 'CROMITE™ ANALYZER' is prominently displayed in the lower-left quadrant.

# CROMITE™ ANALYZER

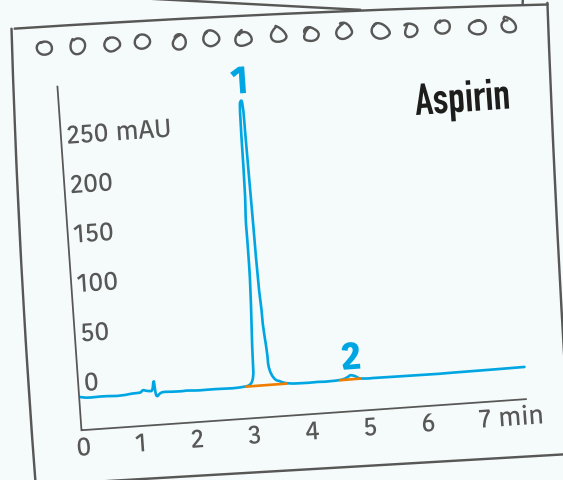
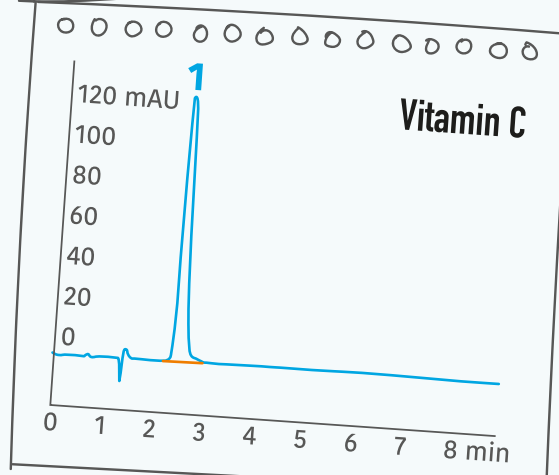
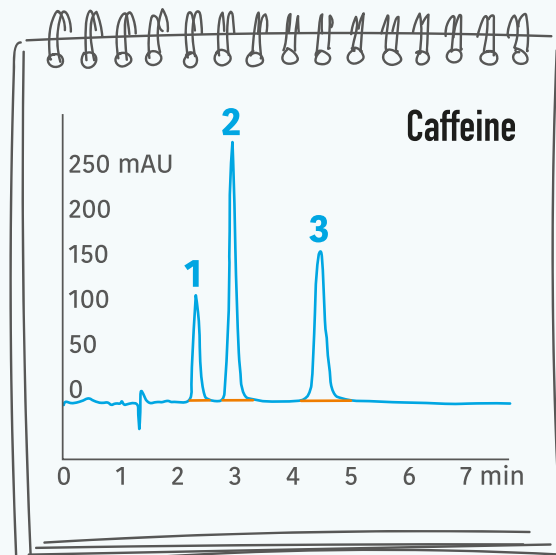
The Cromite™ Analyzer represents a new generation of affordable and easy-to-learn HPLC instrumentation for schools, colleges and universities.

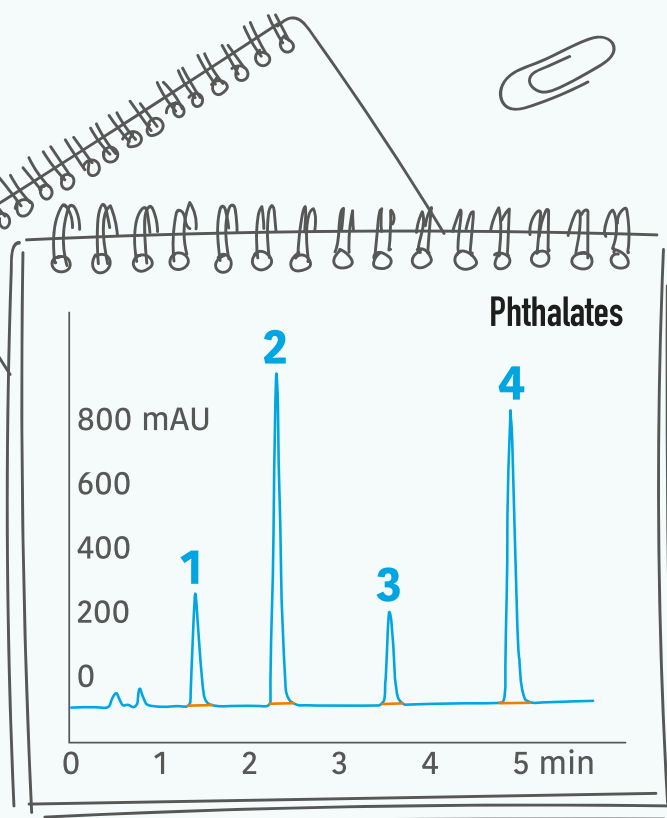
With automated single-vial injection, high-pressure flow and UV/Vis detection capabilities, scholars can use this instrument to separate compounds, such as vitamins in juices, food dyes, caffeine and active ingredients in pharmaceutical products. The cloud-connected software allows you to run tests, analyze results and share data from anywhere and with any device.



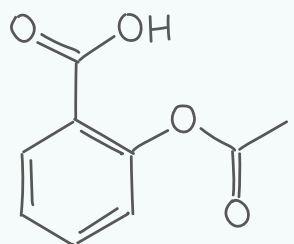
SIELC Technologies provides a vast library of free methods for a variety of compounds, enabling students to characterize and understand the chemical composition of many

different products. The Cromite™ Analyzer comes with a column of your choice and all necessary accessories to perform multiple analyses.





# ALLTESTA™ ANALYZER

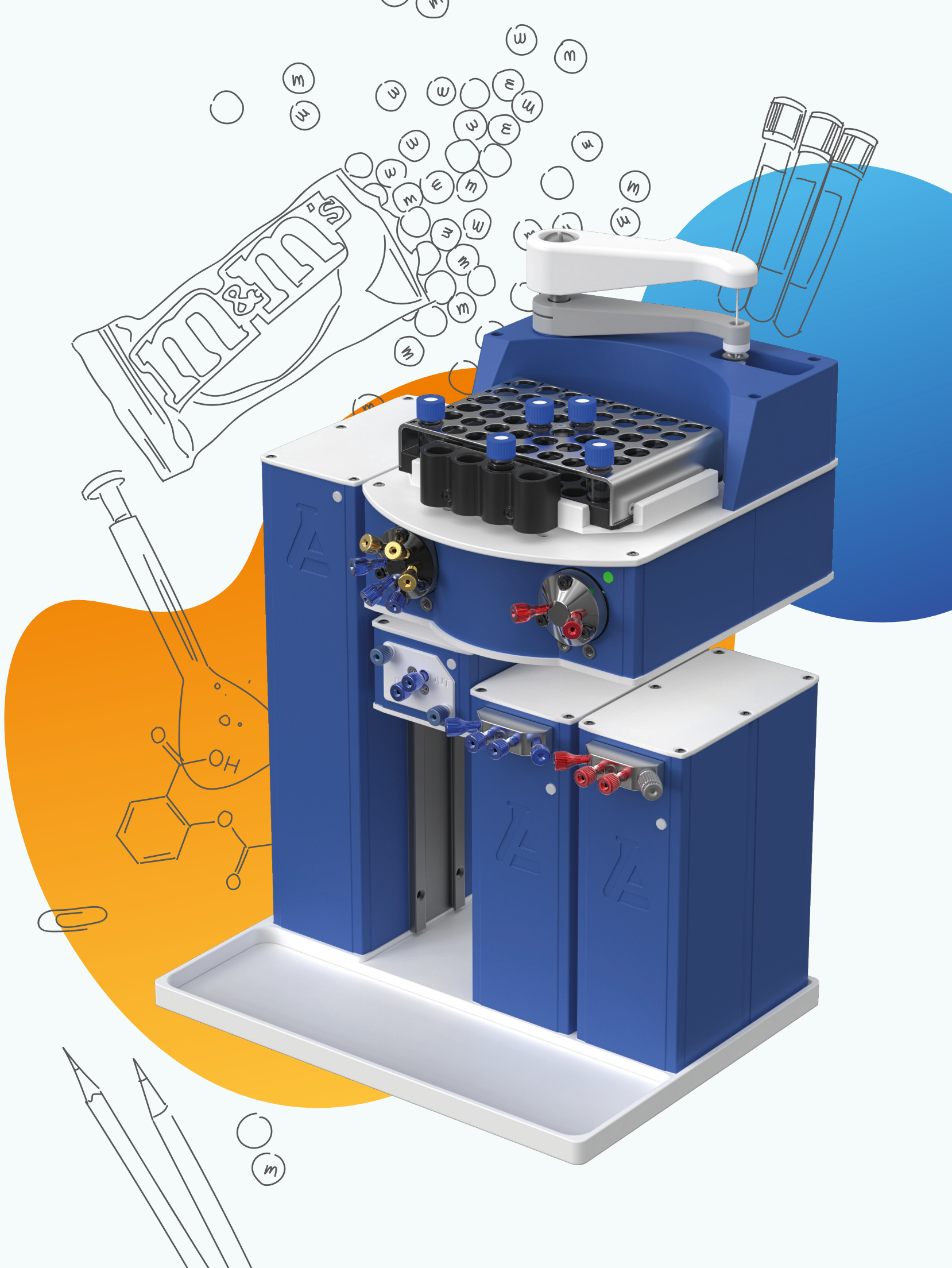


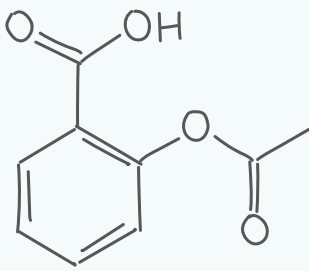
The Alltesta™ Gradient Automated analyzer is a cloud-connected, fully-equipped yet affordable HPLC analytical system that provides laboratories with a powerful chromatographic instrument.

In addition to the on-board Alltesta™ UV-Vis Detector, it also includes the Alltesta™ Mini Autosampler for quick and efficient injection of up to 48 or 96 samples, as well as two Alltesta™ Mini Syringe Pumps that deliver high-pressure and pulsation-free gradient flow. With

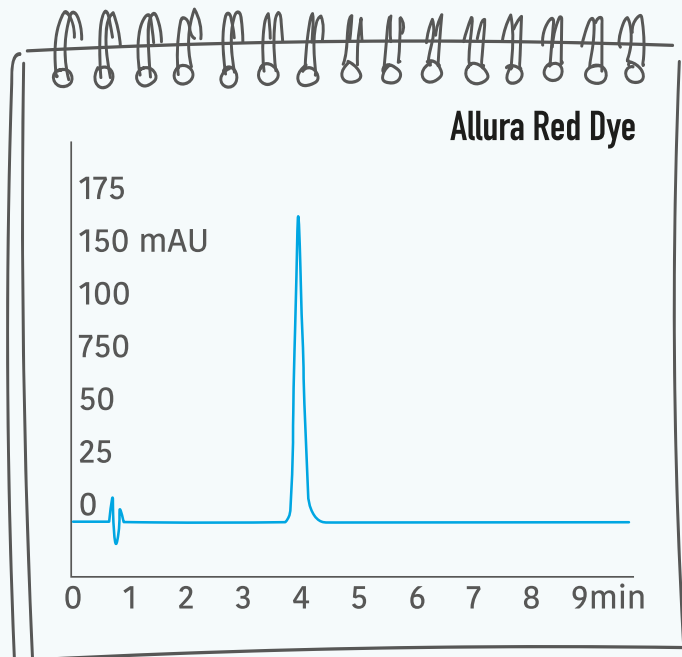
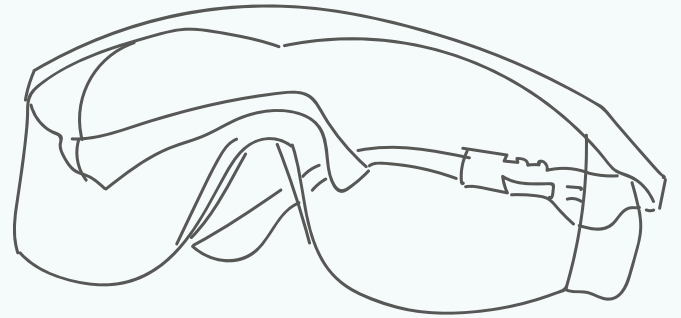
these advanced features, lab users can conduct complex automated research with ease and precision.

The Alltesta™ Analyzer comes with a free HPLC Starter Kit, free access to our library of methods, and our free method development service.





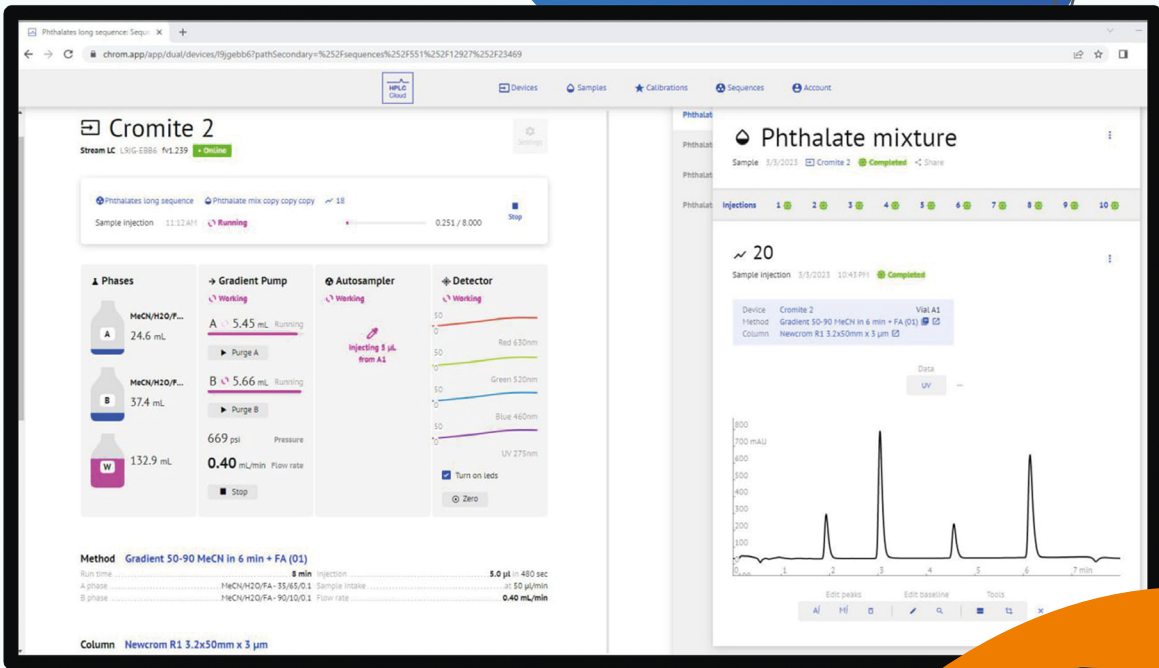
# HPLC.CLOUD SOFTWARE



SIELC has developed the first and only HPLC software accessible via the cloud.

Each analyzer is connected to our secure cloud server via an Ethernet line, allowing users to adjust and control parameters from any internet-enabled device. Analysis

settings are stored as methods, and the results can be easily quantitated and compared across multiple samples.



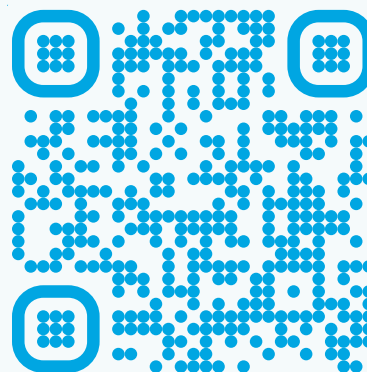


# CONTACTS

Address: 804 Seton Court  
Wheeling, IL USA 60090  
Tel: (847) 229-2629  
Fax: (847) 655-6079

General inquiries: [mail@sielc.com](mailto:mail@sielc.com)  
R&D: [research@sielc.com](mailto:research@sielc.com)  
Support service: [support@sielc.com](mailto:support@sielc.com)

[sielc.com](http://sielc.com)



**SIELC**